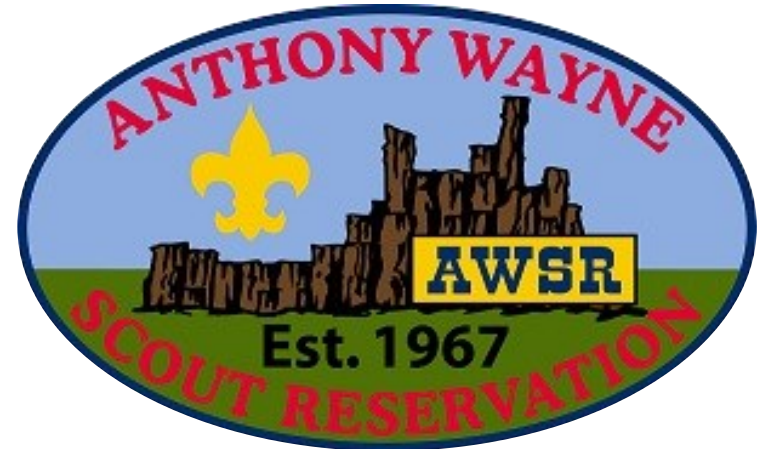




# 2023-2024 Camping & Outdoor Program Guide



**Anthony Wayne Scout Reservation**

**2282 West 500 S.**

**Pleasant Lake, IN 46779**

**260-432-9593**

**[www.ccltbsa.org](http://www.ccltbsa.org)**

**[www.awac.org](http://www.awac.org)**



**Open to the public**

## CHRISTMAS AT CAMP

A HOLIDAY DRIVE-THRU LIGHT DISPLAY

VISIT US	SANTA AND GIFTS
<ul style="list-style-type: none"> <li>December 8-9</li> <li>December 15-16</li> <li>December 22-23</li> </ul>	<ul style="list-style-type: none"> <li>December 8-9               <ul style="list-style-type: none"> <li>Christmas Craft Bazaar</li> </ul> </li> <li>December 16               <ul style="list-style-type: none"> <li>Meet Santa and Mrs. Claus</li> <li>Free Milk and Cookies</li> </ul> </li> </ul>

Event to support youth programs in Northeast Indiana, brought to you by the Anthony Wayne Scout Reservation, 2282 W. 500 S., Pleasant Lake, Indiana  
Contact Betsy Yankowiak for more information: [betsy.yankowiak@scouting.org](mailto:betsy.yankowiak@scouting.org) or 260-704-3457



Greetings Scouters!

Scout Units are always looking for program ideas and most importantly, to **DELIVER THE PROMISE** of adventure in Scouting! Well, look no further than your own council camp, the Anthony Wayne Scout Reservation. AWSR is located just south of Angola, Indiana and consists of 1200 acres, 3 lakes, and the Pigeon River. Each year thousands of Scouts and leaders utilize AWSR for Scout Resident Camp, Cub Resident Camp, weekend camping, family camping, district, and unit events. The Anthony Wayne Scout Reservation is the premier Scout facility in the Central Region!

The Anthony Wayne Area Council has been developing this property since its purchase in 1967. The property boasts over 35 structures including picnic shelters, training centers, a chapel, heated bunkhouses, modern restrooms and shower house facility, and an air-conditioned dining hall that can seat up to 291 people.

A variety of unit program opportunities await you such as Project C.O.P.E, a 30ft climbing/rappelling tower, rifle, shotgun, archery, cycling, and fishing. AWSR also boasts over 25 miles of marked trails for hiking, biking, and ATV.

Weekend programs begin the first weekend in September after Labor Day until the third weekend in May. Contact the council office to see how your unit can take advantage of these great programs and facilities!



# Camp Ambassador Program

As a Camp Ambassador, you may submit a project idea to be considered. Each year, all Ambassadors will meet for fellowship, discuss project proposals, and vote on which project will receive the raised funds. Pending approval from the Camp Properties Committee, the project will be completed and ready by the next camping season. Additional “votes” may also be purchased by individuals or groups to help make their proposals more likely. 100% of the funds raised through the Camp Ambassador Program will be used for submitted projects.



**Pokagon-Kekionga Trails:** The Pokagon-Kekionga Trails Association maintains six marked trails that cover over 35 miles throughout the wilderness at the Anthony Wayne Scout Reservation. All trails begin at the CCLT Parking Lot and are well marked. Trail maps and guides are available through the camp office or online. Trail patches and medals are available for purchase through the Trading Post, Scout Shop, or online!

*Pit Lake Trek: 5 miles*

*Deer Hollow Trek: 5 miles*

*Mastodon Trek: 5 miles*

*Chief Little Turtle Trail: 10 miles*

*Kay Houtz Legend Trail: 10 miles*

*Me-She-Kin-No-Quah Mountain Bike Trail: 10 miles*



[www.pktrails.org](http://www.pktrails.org)

# Spring Training Weekend Continued

## Second Weekend in May

**Course Description:** Learn and practice the 7 principles of Leave No Trace along with the effective presentation of these principles. Includes both classroom and outdoor experiences and presentations. Par-

**Who should attend?:** This course is open to adult Scouters, *Venturers, and Scouts over the age of 14* who are interested in learning more about the 7 principles of Leave No Trace and how to effectively teach those principles and associated skills. All participants who complete this course will be recognized as Leave No Trace Trainers by the Leave No Trace Center for Outdoor Ethics.



**Fee:** \$50.00 – The course fee covers lodging, food, training materials, and awards. Registration is limited to the first 15 participants

**Housing:** Participants will camp in a designated campsite Saturday night. Participants will need to provide their own camping equipment and bedding.

# Trading Post

A trip to camp is not complete without an ice-cold Arrowhead Root Beer! Our Trading Post is fully stocked year-round with snacks, camping essentials, and CCLT merchandise! Open most weekends from 2-6.



## GUIDE INDEX

### SECTION ONE: Weekend Camping

Information & Dates	5
Procedures & Policies	6-7
Campsite Description	8
Heated Bunkhouses	9
Family Cabins	10
Training Centers	11
Program Shelters	12-13
Cole Shooting Ranges	14
Program Opportunities	15-17

### SECTION TWO: Scout Resident Camp

Information & Dates	18
Program Highlights & Merit Badges	19-20
Program Areas	21-28
Reservation Map	22-23
Fees & Registration	30

### SECTION THREE: Cub Resident Camp

Information & Dates	31
Program Highlights	32
Schedule & Rotation	33
Fees & Registration	34

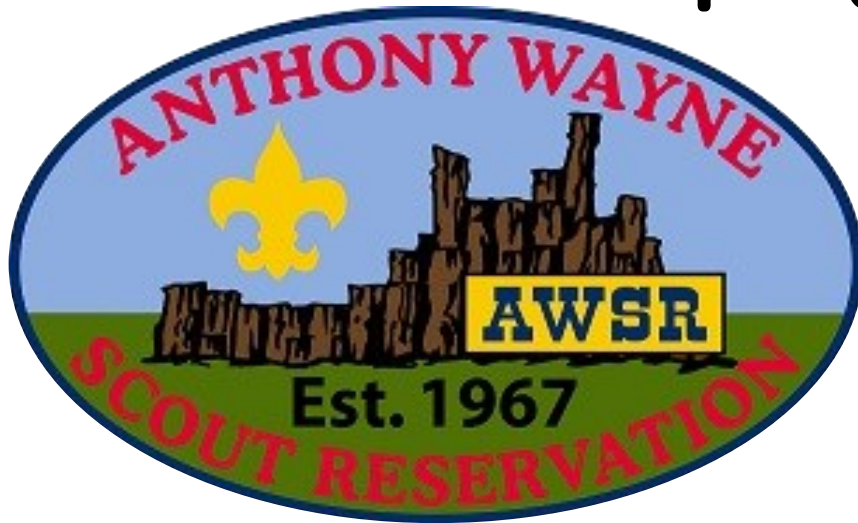
### SECTION FOUR: Family Camping Programs

Information & Dates	35
Family Camp	36
Super Scout Cub-O-Ree	37

### SECTION FIVE: Other Programs

First Day Hike	38
National Youth Leadership Training (NYLT)	38
Order of the Arrow (Kiskakon Lodge 75)	39
Wood Cutter Days	40
Spring Training Weekend	41-42
Certified Angler Instructor	41
Leave No Trace	42
Trading Post	42
Camp Ambassador Program	43
Pokagon-Kekionga Trails	43
Map To Anthony Wayne Scout Reservation	Back Cover

# Weekend Camping



Online reservations:

[www.campreservation.com/157/Camps/193](http://www.campreservation.com/157/Camps/193)

## Spring Training Weekend 2nd Weekend in May



### ATV ASI Certification

Limited to 8 participants (dependent on age).

This training goes through the safety and instructions of how to ride ATV's. To ride during a Scouting event you **MUST** have the ASI Certification.

Age Min: 14yrs old

Cost: \$40

If participant is under 18 they must have

ATV permission slip filled out available at [ccltbsa.org](http://ccltbsa.org)

Participants are required to complete the free, online e-course before arrival. [atvsafety.org/atv-ecourse/](http://atvsafety.org/atv-ecourse/)

### Certified Angler Instructor

This course delivers an understanding of the Mission & Vision of Outdoor Programs-Fishing, assisting in your efforts to Deliver the Promise. You will learn age-based and skill appropriate fishing tools and techniques for your Scouts, ranging from the Cane Pole to Fly Fishing. The course highlights best practices on content delivery, in both the classroom and the field.



### Cub Rangemaster Training

Saturday, May 11, 2024  
8 am – 5 pm

\$20 per person covers materials  
Lunch Provided

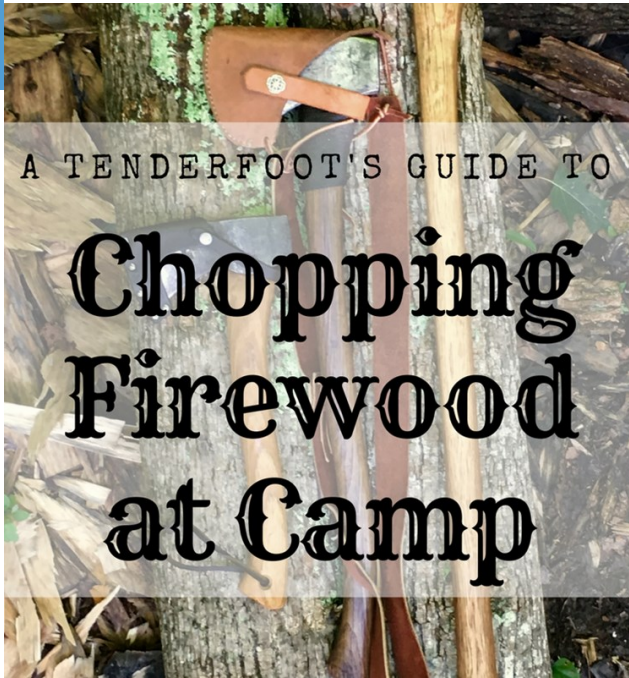
This training is required for Camp Staff working on a Shooting Range for Day or Resident Camp. Training should be taken every 2 years.

NOTE: In order to receive the required Range Master Certification you must attend ALL the Cub Range Master classes for the entire day.

*Skills covered also include: Archery & BB Gun.*

Maximum class size 15 Minimum Age 18

# Wood Cutter Days



**Fall 2023 Cutters Day**  
**Saturday October 28<sup>th</sup> 8:00am – 4:00pm**

**Spring 2024 Cutters Day**  
**Saturday March 23<sup>rd</sup> 8:00am – 4:00pm**

**Fall 2024 Cutters Day**  
**Saturday October 26<sup>h</sup> 8:00am – 4:00pm**

Come join us at Camp Chief Little Turtle to help cut firewood. Please bring along your trucks, log splitters, and manpower!

Adults will run the equipment and youth will lift and carry wood. It's a great unit service project opportunity for Cub Scouts through Venturers.

Everyone helping MUST RSVP, Lunch will be provided. It's vital to know how many people are helping.

Free tent camping this weekend only!

If your unit wishes to help out, please register online so we can get you on the crew list and to have a count for lunch.

Reserve your campsite:

Contact the Program Assistant at [Julie.robison@Scouting.org](mailto:Julie.robison@Scouting.org) or call her at 260-432-9593 to reserve a campsite AFTER you have registered online.

## RESERVATION PROCEDURES

Reservations for camp facilities must be received at the Scout Office or online at least one week prior to the date requested. No reservations will be accepted after this date. Appropriate reservation fees must accompany the reservation. Paid reservations are accepted on a "first come-first served" basis. A **Service Request Form** must also accompany the reservation form so we know how to prepare for your arrival.

Online reservations with current rental fees and Service Request Forms are available for download at the council website or by contacting the Council Service Center (260-432-9593).

[www.awac.org/weekend-camping-at-awsr](http://www.awac.org/weekend-camping-at-awsr)

## CHECK-IN PROCEDURES

Units are asked to check-in at camp with the Campmaster at Long Lake Lodge prior to 9:30 PM and not before 6:00 PM (special arrangements can be made for early/late arrivals). **Unit rosters are due at check-in.**

## CANCELLATION POLICY

Cancellations of less than 3 weeks for other than weather-related issues will forfeit reservation fees. If cancelled for weather related reasons, reservation fees will be refunded on a case by case basis.

## ADULT LEADER POLICY FOR WEEKEND CAMPING

Each unit must provide two-deep leadership throughout the duration of the stay. A minimum of 2 adults present at camp must be over 21 years of age and be registered in the BSA. **All adults that remain overnight must be current registered members of the BSA, have completed the most recent Youth Protection Training, and have a current Health Form** (sections A & B; section C if staying beyond 72 hours) on site with their unit.

In addition, there must be a BSA registered female adult leader 21 years of age or over in every unit serving females.

## CUB SCOUT/WEBELOS LEADER POLICY

Each Den or Pack must be under two-deep leadership throughout the duration of the weekend. All adults must be at least 21 years of age and registered with the BSA. If a Den or Pack has female scouts coming to camp, one registered female leader is required. **All leaders must be, registered, Youth Protection trained, and at least one adult must be BALOO trained.**

## VEHICLE/PARKING POLICY

It is highly encouraged that all vehicles be parked in the provided parking lots and all personal equipment be carried into the site.

- When you must drive, obey the 15-MPH speed limit on the main camp road and **in camp 5-MPH speed limit.**
- The back of trucks, trailers, and the outside of vehicles are not to be used to transport Scouts or any other persons. This is BSA Policy and Indiana State Law.
- Remember, everyone should be wearing a seatbelt anytime a vehicle is moving.

## SMOKING POLICY

The entire Anthony Wayne Scout Reservation is smoke-free. **This includes the use of electronic cigarettes, personal vaporizers, or electronic nicotine delivery systems that simulate tobacco smoking.**

## CAMP RULES/GUIDELINES

1. Build cooking and campfires only in established fire areas. When finished with any fire, be sure it is completely out & dispose of ashes in the garbage.
2. Do not use liquid fuels for starting fires.
3. Do not tamper with the fire alarm systems. If problems with the system, contact the Campmaster or Camp Ranger.
4. Campers must be in their site and quiet between the hours of 11 PM and 7 AM to allow for eight hours of sleep.
5. Knives and hatchets are to be used under the supervision of your leaders only. Do not carve initials or deface our trees, buildings, or equipment in any way; they belong to everybody.
6. Gambling, alcoholic beverages, illegal drugs, pets, fireworks, firearms, slingshots, bows and arrows, paintball guns, and other propellant devices are not permitted on council property.
7. Swimming is only permitted when supervised by certified individuals and only with permission from the Camp Ranger.
8. Fishing on Pit Lake is catch and release only from January to the end of July. See posted regulations for bag limits from August to December.
9. Follow/Obey the Scout Oath and Law.

## BSA RULES & POLICIES

The Anthony Wayne Scout Reservation complies with and enforces all BSA rules, policies, and procedures. All position specific leaders are expected to be knowledgeable of BSA policies. For a complete list of BSA rules, policies, and procedures consult the *Guide to Safe Scouting* available at: [www.scouting.org](http://www.scouting.org)

# ORDER OF THE ARROW



## KISKAKON LODGE

### KISKAKON LODGE ORDER OF THE ARROW "Home of the Standing Bear"



The Order of the Arrow is the Boy Scout's National Honor Society and promotes camping, responsible outdoor adventure, and environmental stewardship as essential components of every Scout's experience, in the unit, year-round, and in summer camp. Kiskakon Lodge provides these opportunities and service at Camp Chief Little Turtle throughout the year.

**Unit Elections:** Chapter youth leaders are available to come to your unit between January and March to talk about the OA, camping opportunities, and conduct an election for eligible scouts to join the Order.

**Fellowship Weekends:** Our Lodge gathers in May and August each year for service and fellowship and to conduct our Ordeal and Brotherhood Inductions. New members are welcomed into the Honor Society and Ordeal members can complete their Induction journey by completing Brotherhood.

**Fall Fun and Vigil Weekends:** This weekend is mainly dedicated to fun and fellowship. While a small amount of service is done Saturday morning, most of the weekend is about meeting and making friends, playing games, doing shooting sports and more. Our Vigil candidates are also inducted into the Vigil Honor during this weekend.

**Lodge Leadership Development:** Our year culminates in a half day of training and learning about our order and developing our leadership skills. Topics like running meetings, doing elections, teamwork games and more are offered to all members.

**<http://www.awac.org/order-of-the-arrow>**



# Other Camp Programs

**FIRST DAY HIKE**  
Anthony Wayne Scout Reservation  
JANUARY 1, 2023 (9AM – 1PM)  
CHECK-IN AT THE TRADING POST FOR TRAIL MAPS **FREE EVENT!**

- \*Open for Scout Families, Patrols, and Units!
- \*Five marked hiking trails to choose from.
- \*Trading Post open for souvenirs.
- \*Trail Patches & Medals available for purchase.

Sponsored by Pokagon-Kekionga Trails Committee & AWAC Outdoor Program & Camping Committee

\*Event will be cancelled in the event of significant snow/ice. Watch Facebook for event updates.

## Baloo Training

Baloo training is required for any Cub Scout den or pack outdoor event including pack camping overnights and Webelos den overnights. Training is recommended for any Cub Scout leader or parent who wants to help plan and carry out an outdoor experience for the pack.



**SEPTEMBER 22-24, 2023**  
**APRIL 26-28, 2024**  
**SEPTEMBER 20-22, 2024**

## IOLS Training

Introduction to Outdoor Leader Skills (OLST) is a fun filled program of hands-on skills training in the outdoors, designed to help you master basic camp skills required for Tenderfoot to First Class. Instructors will help you learn how to set up camp, cook, work with wood tools & ropes, first aid, planning campfire programs, map reading and compass skills, hiking & packing techniques, nature identification, and Outdoor Ethics. It will increase your comfort level and give you confidence as a trained, skilled leader!

REGISTER ONLINE THROUGH THE COUNCIL CALENDAR:

## CAMPSITES *(tented during Summer Camp only)*

Algonquin	1 non-tented site, wooded, (1 unit max) Secluded
Apache	3 tented sites (15 total tents) Wooded, close to dining hall
Cree	2 non-tented sites, wooded, secluded
Crow	5 non-tented site, non-wooded. Hammock Camping sites.
Delaware	5 non-tented site, wooded
Huron	4 tented sites (20 total tents) & 2 non-tented site, non-wooded close to dining hall
Iroquois	5 non-tented sites, non-wooded
Winnebago	2 non-tented sites wooded, overlooks Pit Lake
Fox	2 non-tented sites wooded, close to dining hall
Chippewa	2 non-tented sites (one unit max) wooded, on the crossroads
Mohawk	2 non-tented sites (one unit max) wooded, secluded
Shawnee	2 non-tented sites (two unit max) wooded, close to shower house
Orion	1 non-tented sites (one unit max) wooded, in Wilderness Camp.
Oaks	1 non-tented sites (one unit max) wooded, in Wilderness Camp.



- Tented campsites include 5 BSA wall tents on wood platforms.
- Tents are supplied with two cots and mattresses.
- All sites vary in size, but generally fit 10 people in each patrol site.
- Non-tented patrol sites are open for unit tents.
- Campsites have a latrine, wash stand, and at least two picnic tables.

## HEATED BUNKHOUSES

The Anthony Wayne Scout Reservation has five heated lodges suitable for group camping. Each lodge has bunk beds w/mattresses, automatic gas furnace, fire ring, picnic table, and electric stove/oven for cooking. Space available outside for tent camping. Water available May 1 through Sept 30. Water available year-round at Long Lake Lodge and the Pump House in CCLT.

### THOMS ECOLOGY



- Located in CCLT
- Capacity 24, 12 bunks.
- Includes co-ed limited to 4 partitioned by curtain.
- Nearby latrine
- Water year-round at an outside hydrant.

- Located near parade field in Camp Chief Little Turtle (East of Dining Hall).
- Capacity 32, 17 bunks. Co-ed limited to 6.
- Wash stand & latrine nearby.

### GRANDSTAFF LODGE



- Located in Wilderness Camp.
- Capacity 28, 16 bunks. Co-ed ltd to 6.
- Wash stand & latrine nearby.

### AUBURN LODGE



- Located near Means Canoe Base in Camp Foellinger.
- Capacity 6, 3 bunks. Not Co-ed.
- Wash stand & latrine nearby.
- Propane Heat & Stove.
- No electricity

### RED ARROW LODGE



# Family Camp!!

## Memorial Day & Labor Day Weekends

**Gaga Pit \* Paddle Boards \* Swimming \* Boating \* Fishing \* Hiking \* Campfire \* Archery \* BB Guns**

*Each Family member will receive a commemorative patch*

**\$45 Per Household per weekend Preregistration  
(one week before event)**

**\$55 Per household per weekend at the door**

#### **PLEASE REMEMBER**

- \*Swimming/Boating permitted only during scheduled time WITH adult supervision. No lifeguards will be provided, only qualified supervision will be provided.
- \*All activities during Family Camp Weekend are at your own risk.
- \*Families are welcome to bring bikes, but all riders MUST wear helmets. No bikes will be provided.
- \*At least one member of the household must be a registered member of the Boy Scouts of America.

- **Quiet Hours: 11:30 pm to 7 am**
- All families are expected to obey the Scout Oath and Law.
- All families must check-in at the Camp Trading Post upon arrival.
- Trailers, pop-ups, and RV's are welcome, BUT there are NO hook-ups or services provided.
- Please remember because of the Zebra Mussel infestation, you *cannot* launch personal watercraft on Pit Lake.
- No motors of any kind are allowed on Pit Lake, council-owned canoes and rowboats are provided.
- Families are responsible for your own supplies, food, & tents for this weekend event.
- **Reminder** – there is a **NO** pet policy at camp. **NO** alcohol. **NO** fireworks.

- Campsites are first-come-first-served (no site reservations will be accepted).
- Firewood provided. NO firewood may be brought on the reservation because of invasive species.

**Check-in Fri. 6-8 p.m. - OR - Check-in Sat. 9-10 a.m.**  
**Check-out Mon. by 12 noon**

#### **TRADING POST OPEN FOR SNACKS AND SOUVENIRS!!!**

FRIDAY	6-8 p.m.
SATURDAY	11-12, 1:30-2, 5-5:30p.m.
SUNDAY	11-12, 1:30-2, 5-5:30p.m.
MONDAY	9-10 a.m.

#### **SAMPLE SCHEDULE OF EVENTS!!**

*\*Events & times subject to change due to weather & staffing.*

#### **SATURDAY**

REGISTRATION		9-10
SWIMMING/ BOATING	PIT LAKE)	9-12, 2-5
BB GUNS/ARCHERY (TRADING POST)	(RIFLE RANGE)	2-5

#### **SUNDAY**

BB GUNS/ARCHERY		9-12
SWIMMING/ BOATING	(PIT LAKE)	9-12, 2-5
CAMPFIRE PROGRAM (RIFLE RANGE)	(FIRE RING)	8-9

**Campfire will be cancelled in the event of rain!**

#### **MONDAY**

SWIMMING	(PIT LAKE)	9-11
CHECK-OUT		By NOON



# CUB SCOUT RESIDENT CAMP

## SAMPLE ROTATION SCHEDULE

GROUP	SESSION 1 9-9:50	SESSION 2 10-10:50	SESSION 3 11-11:50	SESSION 4 2-2:50	SESSION 5 3-3:50	SESSION 6 4-4:50
#1	CRAFTS	ARCHERY/BB	<i>FLEX</i>	THEME SPORTS	SWIMMING/BOATING	
#2	THEME SPORTS	<i>FLEX</i>	ARCHERY/BB	CRAFTS	SWIMMING/BOATING	
#3	SWIMMING/BOATING		CRAFTS	ARCHERY/BB	<i>FLEX</i>	THEME SPORTS
#4	SWIMMING/BOATING		THEME SPORTS	<i>FLEX</i>	ARCHERY/BB	CRAFTS
#5	ARCHERY/BB	CRAFTS	11-12 Rest 12-12:50 Lunch	1-2:50 SWIMMING/ BOATING	THEME SPORTS	<i>FLEX</i>

KEY		
PROGRAM	DESCRIPTION	Requirements
B.O.C.O.	Bureau of Clandestine Operations	Forensics Engineer
S.O.C.O.	School of Clandestine Operations	Working with the Pack & (Strooper, Fast, Higher)
S.W.I.M	Special Water Immersion Missions (Aquatics)	Aquasaut, Spirit of the Water, Salmon Run
S.P.A.T.	Special Projectiles and Tactics (Shooting Sports)	BB Guns & Archery
FLEX	Unit led activities (fishing, hiking, games, etc)	

**NOTE: Units will be assigned to a group upon arrival.**

**Multiple dens/packs may be assigned to the same group.**

### CUB RESIDENT CAMP SCHEDULE (Subject to Change)

TIME	DAY 1	DAY 2	DAY 3	DAY 4
6:30 AM		Reveille		
7:15 AM		Camp Breakfast		Breakfast in Campsite
8:30 AM		<i>Assembly &amp; Flag Raising</i>		
8:45 AM		Leader Meeting		
9:00 AM		<b>Session 1</b>		
10:00 AM		<b>Session 2</b>		
11:00 AM		<b>Session 3</b>		
12:00 PM	Unit Arrival & Campsite Setup	Lunch		Final Checkout 11am
1:00 PM		Rest Time		
2:00 PM	Camp Orientation Staff Guides will meet units in campsites.	<b>Session 4</b>		
3:00 PM		<b>Session 5</b>		
4:00 PM		<b>Session 6</b>		
4:30 PM	Leader Meeting			
5:15 PM	1st Shift Dinner			
6:00 PM	<i>Assembly &amp; Flag Lowering</i>			
6:15 PM	2nd Shift Dinner			
7:15 PM	<b>Opening Campfire</b>	Open Program (7:15-9pm)		<b>Opening Campfire</b>
7:30 PM				
9:00 PM				
10:00 PM	Taps (Lights Out)			

1/25/2022

NOTE: ALL SCHEDULES ARE DRAFTS. FINAL COPY OF DAILY SCHEDULE & PROGRAM ROTATION WILL BE PROVIDED AT CHECK-IN.

### FAMILY CABINS

Four fully-furnished cabins are available for your family's next weekend get-a-way! Family cabins are available from the SECOND weekend of August through the LAST weekend in May. Cabins are closed to rental from June 1 through the second week of August due to summer camp. Each cabin sleeps 4 people. 2 bedrooms, one with two twin beds and the second has a double bed. One full bath. Each cabin has a full kitchen equipped with plates, glasses, cookware, and appliances. Furnished living room, covered porch, and driveway parking. Cleaning materials are supplied for clean up. All cabins are air conditioned/heated. Each cabin has a fire ring out front & firewood is provided.

**Renters Need to Bring: Linens, Blankets, and Food.**



Available During Family Camp!



Great For Your Next Family Outing!

## TRAINING CENTERS

### FOELLINGER-SITES TRAINING CENTER (A-Frame)

The Foellinger-Sites Training Center is an ideal location for an adult committee meeting or weekend getaway. The two-level A-Frame is also a great location for unit/district/council training events. The upper level has a complete kitchen, living room, two bedrooms with two single beds each, and a restroom with shower. The lower level has a large meeting room, bunkroom that sleeps eight, and men's and women's restrooms.



### COLE TRAINING LODGE



The Cole Training Lodge is suitable for small conferences. The center has a large meeting area, full kitchen, & six individual showers, two of which are handicap accessible. These showers are also available for weekend use at an additional charge. Not available for unit camping.

### DINING HALL/KITCHEN

The Dining Hall at Camp Chief Little Turtle is a fantastic facility for your next large meeting, family reunion, or reception with A/V equipment. The dining room has a capacity of 291. Men's and women's restrooms. Air conditioned and heated. Water available year round. No alcoholic beverages are allowed. The kitchen area is also available for rental (must have council approved kitchen supervisor).



# Cub Scout Resident Camp

**PROGRAM PHILOSOPHY:** The Anthony Wayne Scout Reservation provides a 1200 acre playground of fun and adventure for all scouts. Scouts have the opportunity to do things they may not have the opportunity to do elsewhere which is why our program does not just focus on advancement, but fun with a purpose in the out-of-doors! Each year, the Camp Leadership Team develops a well-rounded experience that includes theme related, age-appropriate activities, shooting sports, aquatics, nature, and games. Although not a priority when planning program, scouts will also have an opportunity to earn some rank and achievement advancement. All units will receive a report at the end of the session that details any requirements that may have been completed during their stay.



**CRAFTS:** The activity of this program area changes each year based on the theme, but expect scouts to have a full session of "hands-on", theme based projects to complete and take with them!

**THEME SPORTS:** The activity of this program area also changes each year based on the theme, expect scouts to be quite active training to either be a knight, spy, or cowboy! This area often times fulfills requirements for **Running with the Pack & Stronger, Faster, Higher!**

**SHOOTING SPORTS:** Always a favorite among scouts (and leaders), this program includes training in BB Guns and Archery. Along the way, scouts will earn the Level 1 (Participation & Knowledge).

**AQUATICS:** Pit Lake, a former rock quarry, is a crystal clear lake where boating and swimming takes place. This program will not only help you beat the summer heat, but you will have a great time and earn some advancement! Portions of the Wolf **Spirit of the Water**, Bear **Salmon Run**, and Webelos **Aquanaut** will be completed during each session.

**FLEX:** This is an unscheduled time for your den or pack to design your own program. There are plenty of program opportunities that will be available for you to choose from including fishing, disc golf, volleyball, hiking, or just relaxing in your campsite! A list of suggested activities will be made available upon your arrival. Achievement Bags are available to be checked out from the Admin Building.

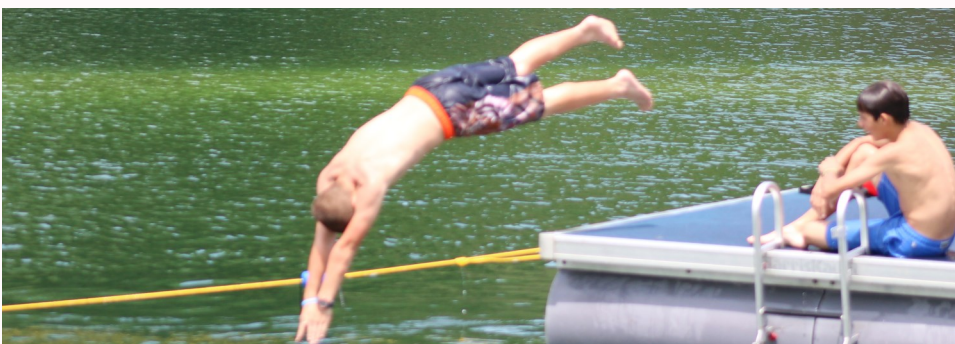
**OPEN PROGRAM:** Program areas will be open for your den or pack to choose from. Programs include (but not limited to) BB, archery, swimming, boating, fishing, branding, field games, and more! Open programming is available on the second evening from 7:15-9:00pm. Units are also encouraged to conduct their own evening campfire program to promote unit camaraderie.

**PACK COMPETITION:** Each year, based on the theme, units will be assigned a project to complete **before** they arrive and to compete against all the other packs!

# Aquatics



- Swim in one of the cleanest lakes in Indiana!
- **Swimming, rowing, sailing, lifesaving, and canoeing!**
- Paddle Craft/ Swimming & Water Rescue.



## PROGRAM SHELTERS

The Anthony Wayne Scout Reservation has a variety of specialty camping areas available for use. These sites provide a unique setting for your units' program needs.

### DEVOE SHELTER



Located in Camp Foellinger, the DeVoe Shelter is available for unit camping or group picnics. Maximum capacity is 64 with 8 picnic tables. Parking and fire ring adjacent. Men's & women's latrines. Running water available from May 1 through September 30.

### COVERED WAGONS

Each of the eight covered wagons can sleep four persons, with a maximum capacity of 32. Additional space is also available for tent camping. Site includes picnic tables and fire ring. Latrine nearby. No water available at site. Located in Camp Foellinger.



### FORT COOPER STOCKADE

Fort Cooper has 3 block houses that comfortably sleep 8 each. Inside tenting is also available. Site includes picnic tables porta-potty, and fire ring. No water or heat available. Located in Camp Foellinger.

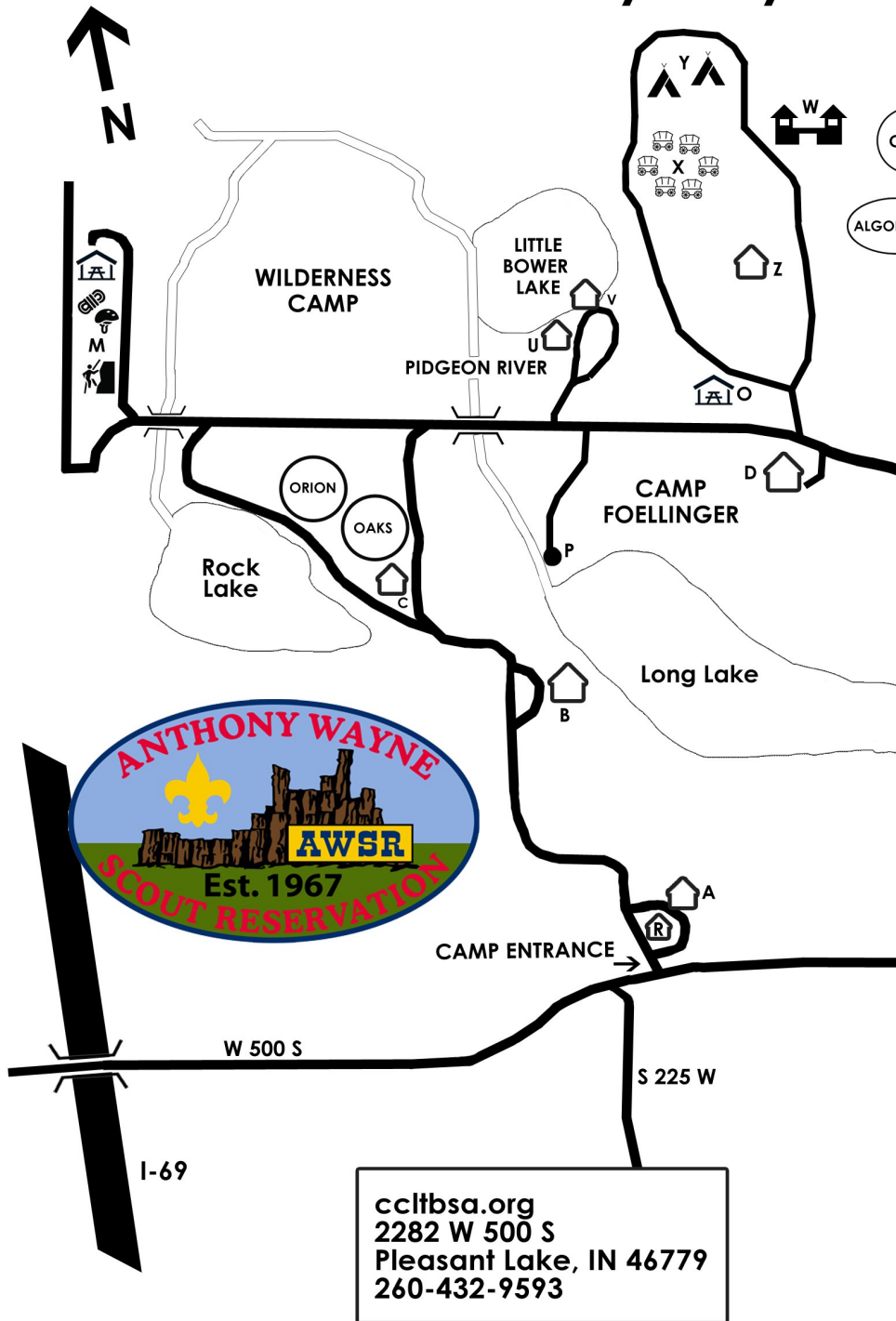


### TEEPEE SHELTERS



These two shelters are a great place for a day program and an excellent backdrop for an overnight activity. Tent camping available around the teepees. Pit Latrine nearby. Running water available at DeVoe Shelter. Located

# Anthony Wayne S



# Shooting Sports

- Rifles, shotguns, black powder, bows & arrow.
- All badges require good hand and eye coordination.
- Open sessions may be needed to complete badges.
- All Shooting Sports activities are supervised by a National Camp School Trained Shooting Sports Director or NRA Certified Instructor.
- LED lights for night shooting



# Ecology/Conservation



- Bird Study - Environmental Science - Forestry - Insect Study
- Mammal Study - Nature - Reptile & Amphibian Study - Geology - Weather

- Utilize the 1200 acres of classroom at Anthony Wayne Reservation.
- AWSR boasts a wide variety of wildlife including White Tail Deer, Pheasant, Turkey, and the not so elusive, Northern Indiana Large Mouth Mosquito!

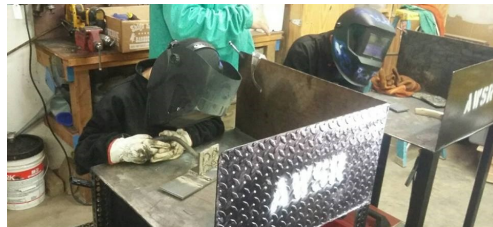


# STEAM

(Science, Trades, Engineering, Arts, Music)

All STEAM programs take place in Grandstaff Lodge just east of the dining hall on the parade field. Many of these merit badges require kits that are provided upon arrival on first day of merit badge. In addition, some extra time may be needed to finish a project outside of the session time.

- ART/ANIMATION
- ASTRONOMY
- AUTOMATIVE MAINTENANCE
- BASKETRY/WOODCARVING
- CHESS
- CRIME PREVENTION/FINGERPRINTING
- GAME DESIGN
- INDIAN LORE/LEATHERWORK
- MUSIC
- PHOTOGRAPHY
- SPACE EXPLORATION
- WELDING/METALWORK
- WOODWORKING

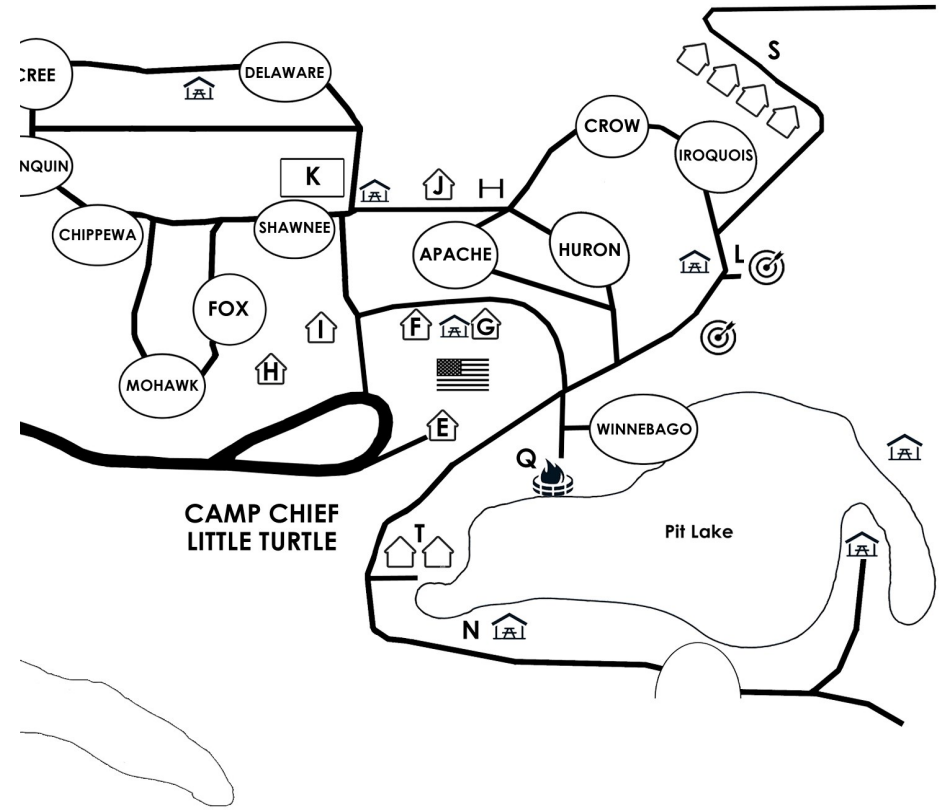


## WELDING & METALWORK

These two courses are taught together in the same course and scouts will work on both during the evening session.



# Scout Reservation



W 500 S

## Buildings & Program Areas

- |  |                             |
|--|-----------------------------|
| A - Warehouse/Maintenance Shop               | N - Waterfront              |
| B - Long Lake Lodge (Weekend Check-In)       | O - Devoe Shelter           |
| C - Auburn Lodge                             | P - Means Canoe Base        |
| D - Foellinger Sites Lodge (A-Frame)         | Q - Campfire Program Center |
| E - Summer Camp Admin/Health Lodge           | R - Ranger House            |
| F - Larsen Lodge (Dining Hall, Trading Post) | S - Family Cabins           |
| G - Grandstaff Lodge                         | T - Lutheran Chapel/Fishing |
| H - Cole Saff Lodge                          | U - Red Arrow Lodge         |
| I - Restrooms/Sports Shed                    | V - Treehouse               |
| J - Thoms Ecology Lodge                      | W - Fort Cooper             |
| K - Showerhouse/Storm Shelter                | X - Covered Wagons          |
| L - Cole Shooting Ranges                     | Y - Teepees                 |
| M - C.O.P.E./Climbing Area                   | Z - ATV                     |

## PROGRAM SHELTERS

### TREE HOUSE

This 15x15 screened-in shelter sleeps 8 on wooden bunks and overlooks Little Bower Lake. Site includes picnic tables, fire ring, and latrine.

Running water available from May 1 through September 30.



### LUTHERAN FOUNDATION CHAPEL



The Lutheran Foundation Chapel sits on Pit Lake and has been host to several training sessions & weddings. Not available for unit camping. Seating for 50. Electricity, but no running water available at this site.

### FOUR CORNERS PAVILION

Located near the shower house, the Four Corners Pavilion is available for unit camping or group picnics. Maximum capacity is 32 with four picnic tables. Includes fire ring and picnic tables. Running water is available nearby from May 1 through September 30.



### TOMAHAWK CORNERS PAVILION

Located near the Cole Shooting Ranges, the Tomahawk Corners Pavilion is available for unit camping or group picnics.

Maximum capacity is 32 with four picnic tables. Includes fire ring. Running water is available nearby from May 1 through September 1.



## ATV Program

- Ride through Carburetor Canyon and become part of the ATV Safety Institute of America (ASI) Safe Rider Coalition.
- Complete trail rides ( Over 13 miles of trails)
- Practice tread lightly skills and complete a conservation trail project.

Minimum age: 14

Maximum class size: Up to 8  
(depends on age of participant's).



## C.O.P.E & Climbing

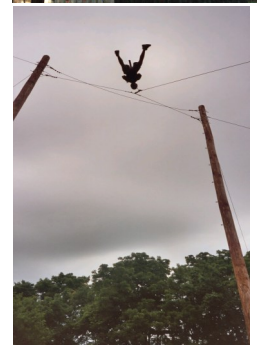
**PROJECT COPE:** (Challenging Outdoor Personal Experience)

is available to Scouts **at least 13 years old**. The course includes climbing, skywalk events, & a zip line!! Adult leaders are encouraged to participate. **THE PROGRAM MUST HAVE A MINIMUM OF EIGHT PARTICIPANTS PER SESSION TO BE OFFERED.** Recommended for 3rd year campers & older.

**CLIMBING:** CCLT's 30-foot tower will give you the opportunity to test your skills. This is recommended for 3rd year campers and older.



**FLYING SQUIRREL:** The participant is attached to a climbing rope hung from a pulley nearly 40 feet above the ground. The participant is quickly pulled from the ground into the air in a matter of second and becomes the Flying Squirrel!



# Sports

- Horseshoes, disc golf, gaga ball, 9 square, volleyball, & bag toss, etc.
- Units can check out mountain bikes, mountain boards, etc.



# Outdoor Skills

- Located at Tomahawk Corners (near the tomahawk range)!
- Pioneering, Wilderness Survival, Sign, Signals & Codes, Fire Safety, Orienteering, and more!
- Work on your Firem'n Chit and your Totin Chip.
- Stop over and get some guidance on that camp gadget.



# WEEKEND PROGRAM OPPORTUNITIES

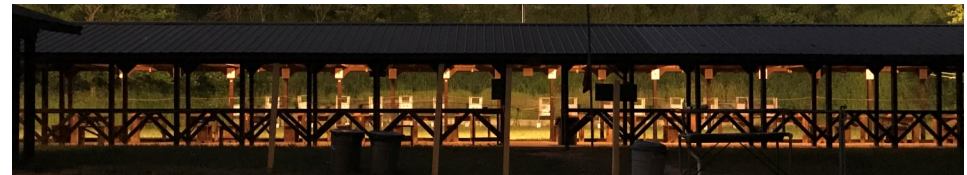
## COLE SHOOTING SPORTS RANGES

An excellent troop, crew, team, or ship weekend activity. Spend a half day or full-day with a NRA certified instructor and NRA Range Safety Officer or a USA Archery Level I instructor on any one of our shooting sport ranges. All dates are dependent on Range Officer availability. At least 30 days notice is required. Unit Merit Badge weekends are also available upon request. Please note the required minimums & maximums. Deviation from these guidelines is at the discretion of the assigned Range Safety Officer. Rental Fees include ammunition and consumable supplies.

### RANGE FEES

	<u>1/2 Day</u>	<u>Full Day</u>
<b>ARCHERY:</b>	<b>\$100.00</b>	<b>\$200.00</b>
<i>MINIMUM OF 8 PARTICIPANTS, MAXIMUM OF 36</i>		
<b>SHOTGUN:</b>	<b>\$150.00</b>	<b>\$250.00</b>
<i>MINIMUM OF 8 PARTICIPANTS, MAXIMUM OF 25</i>		
<b>RIFLE:</b>	<b>\$150.00</b>	<b>\$250.00</b>
<i>MINIMUM OF 8 PARTICIPANTS, MAXIMUM OF 32</i>		
<b>TOMAHAWK &amp; KNIFE THROWING</b>	<b>\$100.00</b>	<b>\$175.00</b>
<i>MINIMUM OF 8 PARTICIPANTS, MAXIMUM OF 18</i>		

***\*\*The above rates provide a guide for event planning, to customize your event please contact the Director of Camping at the Council Service Center.***



## MEANS CANOE BASE

Bring your own or use the council-owned canoes and head down the Pigeon River. The Pigeon River heads West for hundreds of miles. A great place to start whether you are looking for a short cruise or an overnight excursion. Canoes are available for rent through the council office. Unit must provide trained leadership. Personal Flotation Devices must be worn and are provided by the council. Canoes rent for \$15 per canoe. Trailer fee \$50.

## WEEKEND PROGRAM OPPORTUNITIES

### ATV

Spring & Fall ATV activities are available during specific weekends at CCLT. Reservations are required and class sizes are limited. Units may sign up and camp if they desire, and take advantage of both Saturday & Sunday activities, or come for one day only. Both Scouts & Leaders are welcome to participate! *OR ...*



Units that wish to schedule their own ATV weekend (April-Oct.) may submit a request for a date (plus an alternate) to the Council Program Assistant. The office will confirm availability of an Instructor for the desired weekend. Then the unit may complete the registration process, keeping in mind there is a 5 participant minimum to schedule.

Cost: \$40.00 per person.

Age: 14 and up.

Class Size: Up to 8 (dependent on age of participant's).

Pre-Course: Must take online Course at <https://atvsafety.org/atv-ecourse/>

#### **You MUST Bring:**

- \* Long Pants
- \* Long sleeve shirt
- \* Boots that cover your ankles
- \* Water bottle

#### **We Will Provide:**

- \* Age-appropriate ATV Helmet
- \* Goggles
- \* Gloves

### FISHING

Pit Lake is an excellent location for your next unit, patrol, or den fishing outing. Fishing programs (including equipment) may be scheduled through the council service center. A trained Certified Angler Instructor must be present when using council equipment. \$25 equipment usage fee. 20 max for fishing, 6 max for fly fishing. Bait not included and must be provided by the unit.



## MERIT BADGES

ANIMATION  
 ARCHERY  
 ART  
 ASTRONOMY  
 AUTOMOTIVE MAINTENANCE  
 BASKETRY  
 BIRD STUDY  
 CANOEING  
 CLIMBING  
 CHESS  
 CITIZENSHIP IN THE NATION  
 CITIZENSHIP IN THE WORLD  
 COMMUNICATION  
 CRIME PREVENTION  
 EMERGENCY PREP  
 ENVIRONMENTAL SCIENCE  
 FINGERPRINTING  
 FIRE SAFETY  
 FIRST AID  
 FISHING  
 FLY FISHING  
 FORESTRY  
 GAME DESIGN  
 INDIAN LORE  
 INSECT STUDY  
 KAYAKING  
 LEATHERWORK  
 LIFESAVING  
 MAMMAL STUDY  
 METALWORKING  
 MUSIC  
 NATURE  
 ORIENTEERING  
 PHOTOGRAPHY  
 PIONEERING  
 RADIO  
 REPTILE & AMPHIBIAN STUDY  
 RIFLE  
 ROWING  
 SALESMANSHIP  
 SHOTGUN  
 SIGNS, SIGNALS, CODES



SMALL BOAT SAILING  
 SPACE EXPLORATION  
 SUSTAINABILITY  
 SWIMMING  
 WELDING  
 WILDERNESS SURVIVAL  
 WOODCARVING



The summer program at the Camp Chief Little Turtle is sure to have something for your youth! Whether your looking for a traditional Scout week at camp or a week-long challenge testing the skills of your youth against units from across the region. Check-out the following pages and get signed up now for an exciting summer at camp!

## PROGRAM HIGHLIGHTS

- 50+ Merit Badges
- Fly Fishing
- BSA Standup Paddle Boarding Award
- Mountainboards, Trek Mountain Bikes
- 30 ft. Climbing/Rappelling Tower
- Black Powder (Muzzle Loader Madness)
- Over 25 miles of hiking trails
- Little Turtle Cup!
- Air-Conditioned Dining Hall
- Premier Fishing (3 lakes)
- Rope Swing
- Snorkeling, BSA Award
- Project C.O.P.E
- Tomahawk Range
- ATV's
- Welding & Metalworking
- Small Boat Sailing
- Flying Squirrel!
- Kayaking
- Field Games
- S.T.E.A.M Program
- *Much, Much, More !*



## WEEKEND PROGRAM OPPORTUNITIES

### PROJECT COPE

Project COPE is a national program of the Boy Scouts of America. COPE, which was launched in 1983, stands for “**Challenging Outdoor Personal Experience.**”

The program is composed of group initiative games, trust events, low-course events and high-course events. Some activities involve a group challenge, while others develop individual skills and agility. Participants climb, swing, balance, jump, rappel, and devise solutions to a variety of problems. Most participants achieve much more than they imagined they could.

The stimulating activities and events of Project COPE are designed to meet the needs of people of all ages who are seeking ways to challenge and expand their physical and mental abilities. As a noncompetitive program, Project COPE permits every participant to be a winner and the underlying goals of Project COPE will often carry on into the workplace. The group activities are ideal for enhancing the leadership and teamwork of Scout units and activities challenging individuals can be used to bolster self-esteem & promote personal growth. A typical Project C.O.P.E. event will run all day Saturday & half-day Sunday.



Project C.O.P.E is recommended for Troops, Posts, Crews, and Ships. ***Cub Scouts may not participate in any Project C.O.P.E Activity.***

Groups must have a minimum of 8 participants and a maximum of 18 participants.

Scout Units must complete a Reservation

Form for overnight accommodations. Units will provide their own meals and adult leadership. Please note that all camp use fees are in addition to the Project C.O.P.E. fees. Project COPE experiences are also available to non-scouting entities such as a sports team, youth group, or corporate group. Contact the Council Service Center for more details.

## WEEKEND PROGRAM OPPORTUNITIES

### CLIMBING TOWER

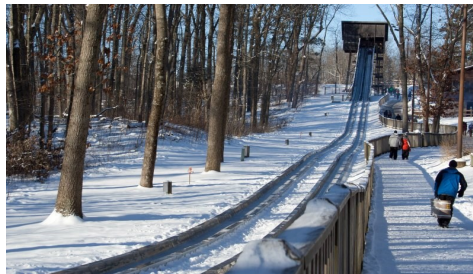
Our 30-foot climbing/rappelling tower will give you the opportunity to test your skills on three sides of difficulty. Ceramic finger tip and foot holds help you plan your ascent to the deck above or you can repel down the shear side, swinging out over the earth, all controlled by you, the ropes, and your belayer. Half-day, full-day, and Merit Badge programs are available for your pack, troop, crew, ship, or post! Our tower is age-appropriate for Webelos Scouts. Consult the BSA Age-Appropriate Guidelines for more on what your Scouts can/can't do.



### AREA ATTRACTIONS

#### Pokagon State Park Toboggan Run:

Located only 15 minutes away off I-69 is one of the largest refrigerated toboggan slides in the country. Pokagon State Park is located in Angola, Indiana, approximately six miles from the Indiana Toll Road. The Toboggan Run is a 1,780-long refrigerated twin track thriller, where riders reach speeds in excess of 40 mph! Open 10 a.m. to 6 p.m. from the last weekend in November until the last weekend in February. If there is enough snow cross-country skiing is also very popular and equipment is available for a small fee. Toboggans can carry up to four people and are rented by the hour.



**Auburn Cord Duesenberg Museum:** Just 25 minutes South of the Anthony Wayne Scout Reservation in Auburn, Indiana. The ACD Museum features more than 100 classic and antique vehicles from the 19th century to present era, with emphasis on cars built in Indiana.

# Scouts BSA Resident Camp



### 2024 CAMP DATES

Week 1 Scouts BSA

June 16-22

Week 2 Scouts BSA

June 23-29

Week 3 Scouts BSA

June 30-July 6

Week 4 Scout BSA

July 7-13

[ccltbsa.org](http://ccltbsa.org)